

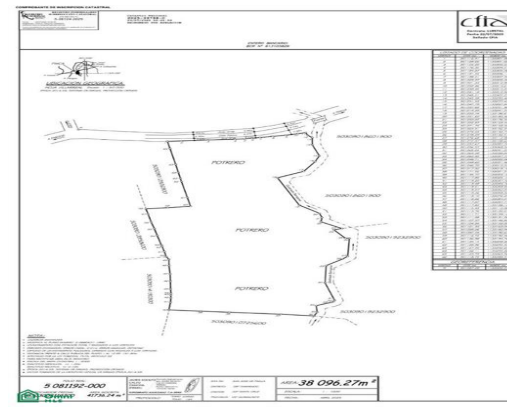
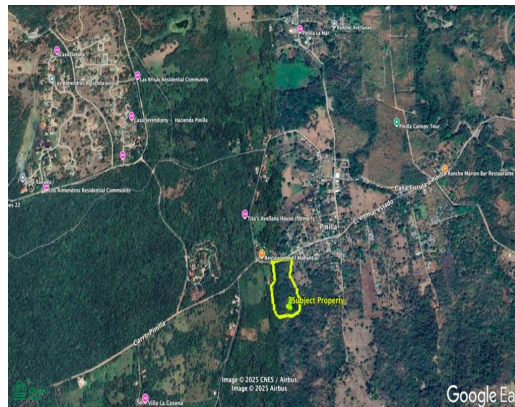
# Land For Sale

📍 Santa Cruz, Guanacaste

# \$1,099,000

ID: 1134452082

Property Type: Land • Size: 38,000 SQ M •



• Status: Available

## Property Description

Over 130 m of Roadfront Exposure on Main Route to JW Marriott – Perfect for Tourism, Residential or Commercial Development This exclusive 38,096 m<sup>2</sup> property sits less than 3 km by paved road from the white sands of Playa Avellanas, with more than 131.8 m of direct frontage on the high-traffic highway leading to JW Marriott Reserva Conchal. A recent professional cadastral survey (G-36124-2025) confirms the boundaries and location as registered in Costa Rica's SIRI system, ensuring a clean title and accurate lot dimensions. Whether you're looking for a long term investment, planning a future development boutique resort, home subdivision or mixed use complex, this site lends itself to a variety of uses. Important Facts: Land Area: 38,096 m<sup>2</sup> (approx. 9.6 acres) Road Frontage: Over 131.8 m on the main paved route to Playa Avellanas and JW Marriott Reserva Conchal Beach Proximity: Less than 3 km to Playa Avellanas via paved road Survey Verification: Boundaries and location match the SIRI registry per cadastral survey G-36124-2025 Coordinates: 10.

## Additional

- ID 1134452082
- Available
- For Sale
- Land
- \$1,099,000
- Unfurnished

Costa Rica Direct: +506 8723 3789

US Number:

Centro Comercial The Village in Brasilito, Guanacaste, Costa Rica,  
50308

